

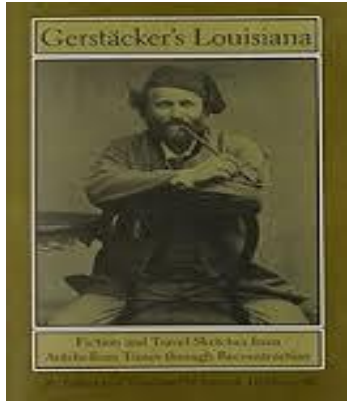
**Honors 2030: Honors Colloquium:**

**Louisiana's German Roots**

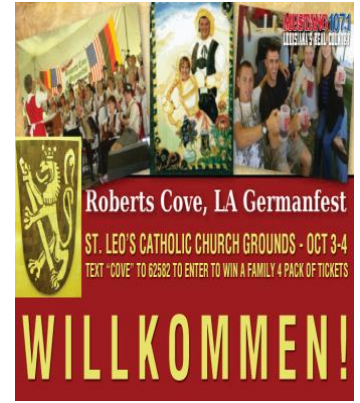
Mon/Wed/Fri 11:30 – 12:20 p.m., 218 French House

Instructor: Michael B. Dettinger, Ph.D.

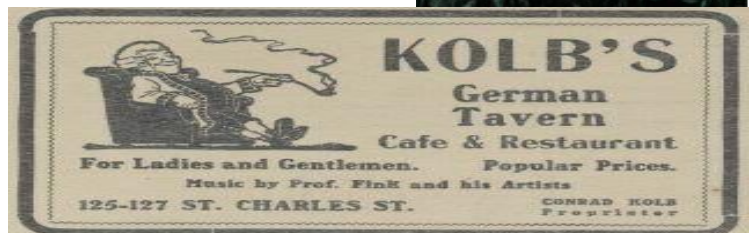
**Early Settlers & Travelers**



**Louisiana Traditions & German Influences**



**Current Traditions**



**Course Description**

This course will examine German historical and cultural roots in the state of Louisiana from the 18th Century to present day. We will concentrate on the early arrival of German settlers, the historically German geographic areas of Louisiana, the influence of German customs on Louisiana culture, and the shared traditions between both Louisiana and Germany. Students will also have the opportunity to interact with special guest lecturers and authors of the texts read and discussed in class. Texts will include films and fiction, as well as historical and theoretical literature by European and American scholars. Course and exchange taught in English. No knowledge of German required.

For more information please contact Dr. Dettinger: [mbdett1@lsu.edu](mailto:mbdett1@lsu.edu)